

Aprel oyida o‘tkazilgan chet tilini bilish va egallash darajasini baholash test sinovi natijalarining statistik tahlili

Ingliz tilidan B2 darajasi uchun sinovlarning 1-smenasida 554 nafar talabgor, 2-smenasida esa 484 nafar talabgor ishtirok etdi. Test sinovlarining tinglab tushunish, o‘qish va leksik-grammatik kompetensiyalar bo‘limlari klassik hamda zamonaviy test nazariyalari asosida statistik tahlil qilindi.

I. Ingliz tili B2 daraja sinovlarining klassik test nazariyasi bo‘yicha tahlili

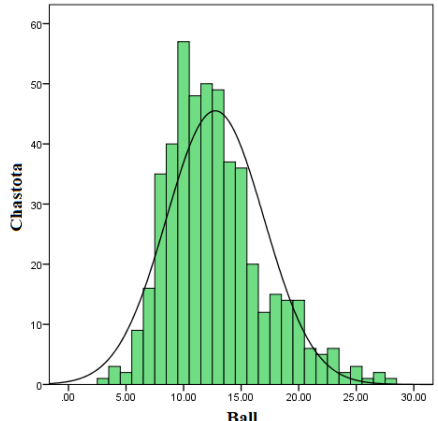
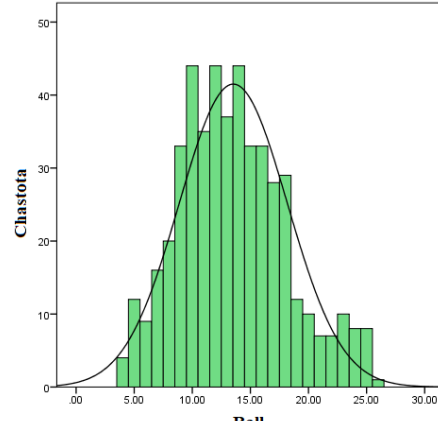
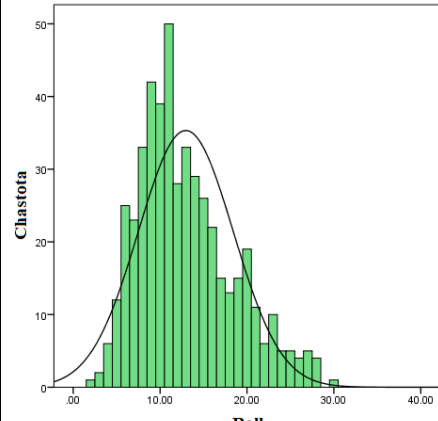
Test sinovi natijalarining tavsif statistikasi 1-smena

Tinglab tushunish		O‘qish		Leksik va grammatik kompetensiyalar	
Qatnashchilar soni	554	Qatnashchilar soni	554	Qatnashchilar soni	554
O‘rtacha qiymat:	15,86	O‘rtacha qiymat:	12,99	O‘rtacha qiymat:	15,96
Mediana:	16	Mediana:	12	Mediana:	17
Moda:	13	Moda:	12	Moda:	17
Standart tafovut	3,82	Standart tafovut	4,65	Standart tafovut	5,11
Dispersiya	14,56	Dispersiya	21,64	Dispersiya	26,15
Asimmetriya	0,083	Asimmetriya	0,523	Asimmetriya	-0,221
Eksess	0.07	Eksess	0,109	Eksess	-0,731
Diapazon	23	Diapazon	27	Diapazon	26
Minimal	4	Minimum	2	Minimum	3
Maksimal	27	Maksimum	29	Maksimum	29

--	--	--

2-smena

Tinglab tushunish		O'qish		Leksik va grammatik kompetensiyalar	
Qatnashchilar soni	484	Qatnashchilar soni	484	Qatnashchilar soni	484
O'rtacha qiymat:	12,75	O'rtacha qiymat:	13,53	O'rtacha qiymat:	12,96
Mediana:	12	Mediana:	13	Mediana:	12
Moda:	10	Moda:	10	Moda:	11
Standart tafovut	4,24	Standart tafovut	4,65	Standart tafovut	5,47
Dispersiya	17,99	Dispersiya	21,65	Dispersiya	29,88
Asimmetriya	0,815	Asimmetriya	0,406	Asimmetriya	0,708
Eksess	0,709	Eksess	-0,163	Eksess	0,013
Diapazon	25	Diapazon	22	Diapazon	28
Minimal	3	Minimum	4	Minimum	2
Maksimal	28	Maksimum	26	Maksimum	30

		
---	---	--

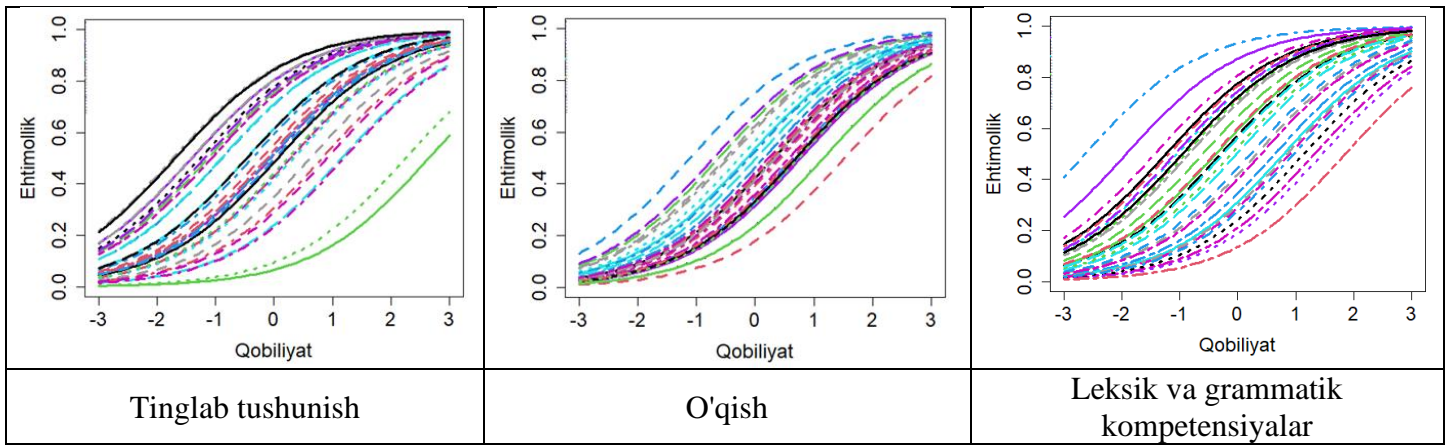
Ishonchlik tahlili

Til	Bo'lim	O'rtacha qiymat	Standart tafovut	Koeffitsiyent alfa	Standart xatolik
1-smena	Tinglab tushunish	15,86	3,82	0,59	2,44
	O'qish	12,99	4,65	0,704	2,53
	Leksik va grammatik kompetensiyalar	15,97	5,11	0,785	2,37
	Umumiy	44,73	11,52	0,863	4,26
2-smena	Tinglab tushunish	12,75	4,24	0,648	2,52
	O'qish	13,53	4,65	0,712	2,50
	Leksik va grammatik kompetensiyalar	12,96	5,47	0,808	2,40
	Umumiy	39,23	12,04	0,872	4,31

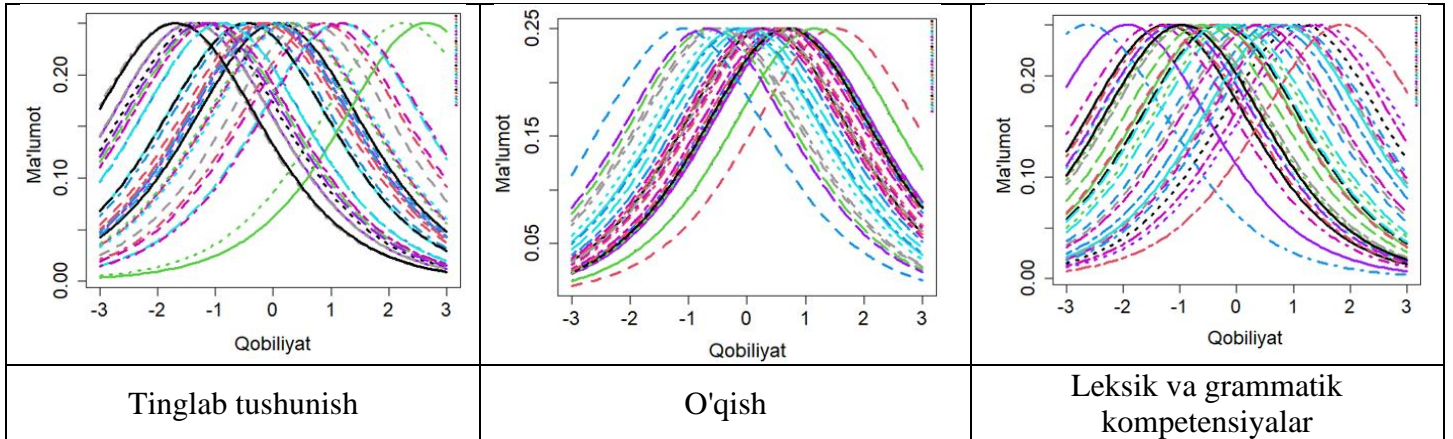
II. Ingliz tili B2 daraja sinovlarining zamonaviy test nazariyasi bo'yicha tahlili

1-smena

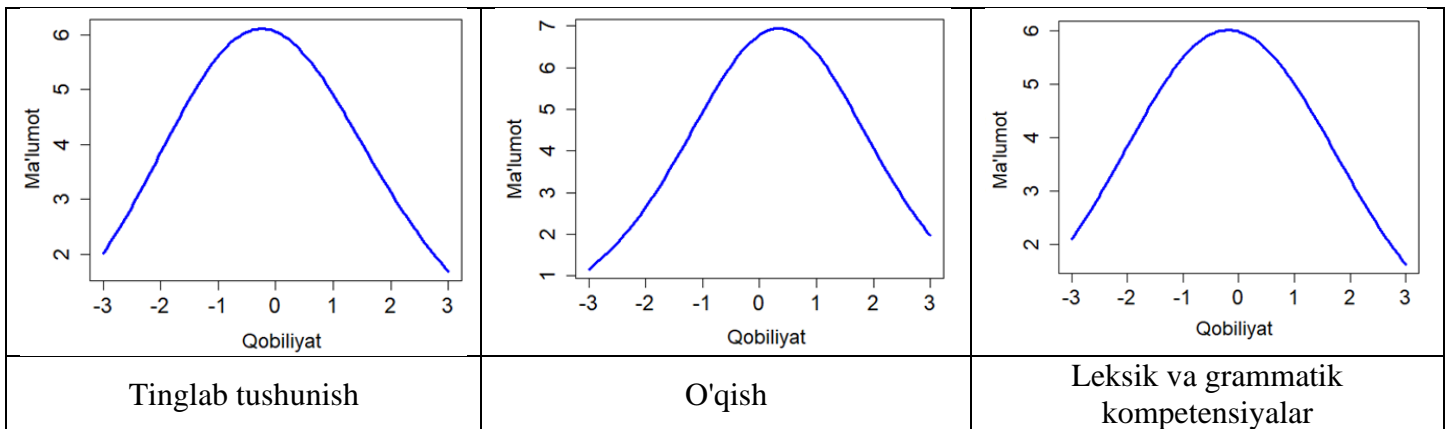
Tinglab tushunish			O'qish			Leksik va grammatik kompetensiyalar		
Test topshirig'i	Qiyinlik darajasi (b)	$P(x=1 z=0)$	Test topshirig'i	Qiyinlik darajasi (b)	$P(x=1 z=0)$	Test topshirig'i	Qiyinlik darajasi (b)	$P(x=1 z=0)$
Item16	-1.72422	0.848672	Item20	-1.10662	0.751499	Item4	-2.62928	0.932722
Item25	-1.68459	0.843511	Item23	-0.7043	0.66914	Item7	-1.9178	0.871893
Item24	-1.41391	0.804382	Item11	-0.61699	0.649534	Item22	-1.42751	0.806512
Item7	-1.40255	0.802588	Item8	-0.50591	0.623848	Item1	-1.23505	0.774701
Item9	-1.25948	0.778937	Item16	-0.44704	0.609934	Item10	-1.18104	0.765135
Item23	-1.18618	0.766058	Item21	-0.26511	0.565893	Item23	-1.0764	0.745811
Item11	-1.12509	0.754932	Item13	-0.1429	0.535665	Item21	-1.04562	0.739933
Item30	-1.06547	0.743734	Item28	-0.10234	0.525563	Item25	-0.95555	0.722229
Item29	-0.89416	0.709749	Item29	0.019114	0.495222	Item2	-0.94564	0.720237
Item28	-0.88493	0.707842	Item12	0.148946	0.462832	Item3	-0.89678	0.710288
Item13	-0.46735	0.614757	Item30	0.230579	0.442609	Item24	-0.83896	0.698247
Item17	-0.45903	0.612785	Item18	0.28808	0.428474	Item11	-0.59793	0.645183
Item4	-0.37657	0.593046	Item3	0.28808	0.428474	Item26	-0.40279	0.599358
Item26	-0.21431	0.553373	Item17	0.312813	0.422428	Item19	-0.37665	0.593066
Item18	-0.11802	0.52947	Item24	0.345951	0.414365	Item17	-0.29004	0.572006
Item12	-0.07003	0.5175	Item22	0.395906	0.402296	Item29	-0.24698	0.561433
Item6	-0.054	0.513497	Item10	0.437816	0.392262	Item27	-0.11037	0.527564
Item20	0.010109	0.497473	Item6	0.574126	0.360285	Item5	-0.01683	0.504208
Item1	0.06588	0.483536	Item26	0.634983	0.346382	Item20	0.221085	0.444953
Item27	0.234902	0.441543	Item4	0.634984	0.346381	Item8	0.324072	0.419684
Item15	0.275219	0.431626	Item15	0.652529	0.34242	Item30	0.401921	0.400851
Item2	0.283202	0.429669	Item25	0.696729	0.332538	Item12	0.640745	0.345078
Item21	0.332261	0.417691	Item1	0.71454	0.328596	Item13	0.796915	0.310686
Item8	0.616846	0.350499	Item5	0.732444	0.324659	Item16	0.853488	0.298702
Item10	0.820154	0.305731	Item27	0.741415	0.322695	Item14	0.901524	0.288737
Item14	0.903134	0.288407	Item14	0.741425	0.322693	Item28	0.969457	0.274989
Item5	1.157541	0.239114	Item7	0.777561	0.314846	Item9	1.141071	0.242124
Item22	1.199045	0.231645	Item9	1.164379	0.237873	Item6	1.324358	0.210094
Item3	2.248563	0.095474	Item19	1.164406	0.237868	Item15	1.462221	0.188128
Item19	2.646519	0.066204	Item2	1.524141	0.178853	Item18	1.853575	0.135454



Element xarakteristika chiziqlari



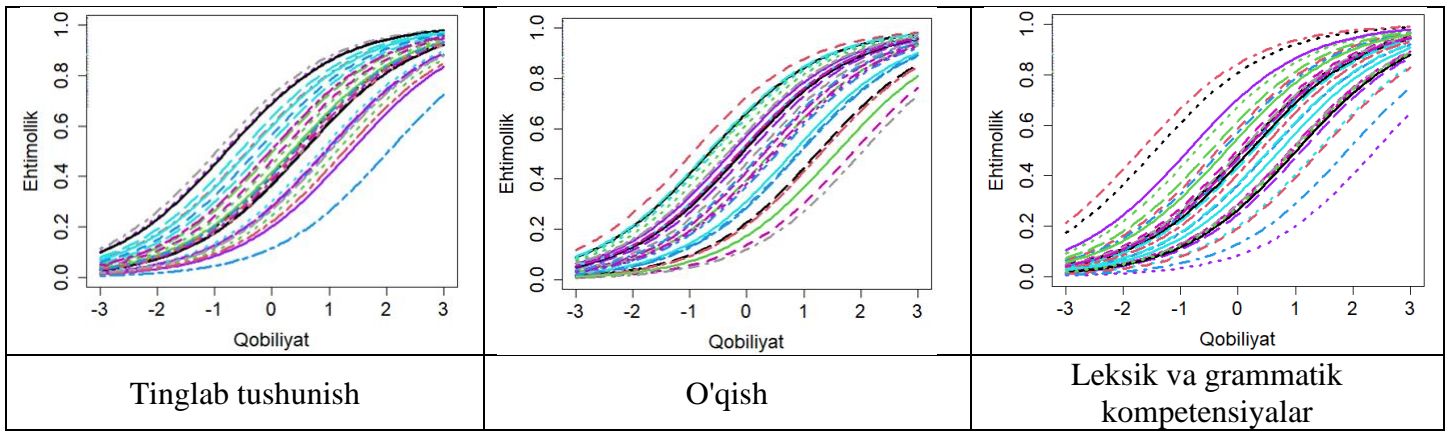
Element ma'lumot chiziqlari



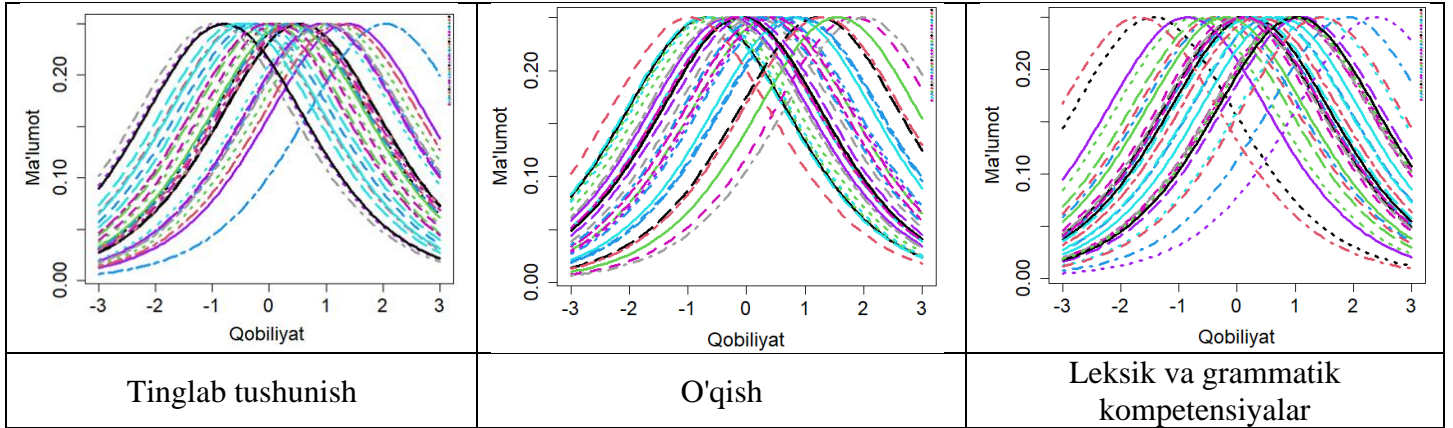
Test ma'lumot chiziqlari

2-smena

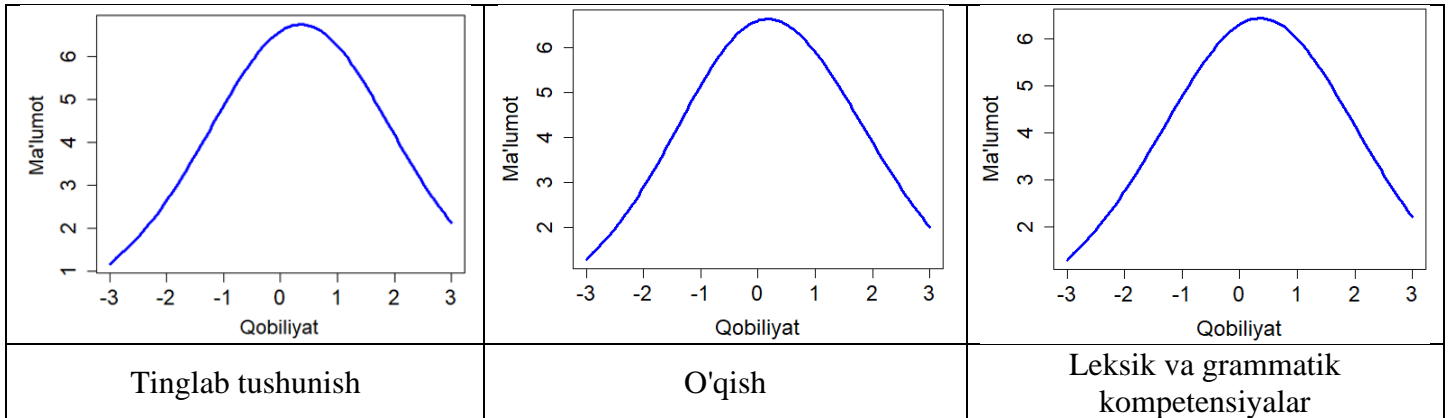
Tinglab tushunish			O'qish			Leksik va grammatik kompetensiyalar		
Test topshirig'i	Qiyinlik darajasi (b)	$P(x=1 z=0)$	Test topshirig'i	Qiyinlik darajasi (b)	$P(x=1 z=0)$	Test topshirig'i	Qiyinlik darajasi (b)	$P(x=1 z=0)$
Item16	-0.9575	0.72262	Item26	-0.9682	0.72477	Item10	-1.6891	0.84411
Item15	-0.8309	0.69654	Item5	-0.7054	0.66939	Item9	-1.4375	0.80806
Item25	-0.7898	0.6878	Item1	-0.6752	0.66268	Item7	-0.8609	0.70284
Item29	-0.5525	0.63472	Item3	-0.6252	0.6514	Item3	-0.7239	0.67347
Item10	-0.4285	0.60551	Item21	-0.5954	0.64461	Item11	-0.4706	0.61552
Item13	-0.4002	0.59875	Item27	-0.4781	0.61731	Item2	-0.3522	0.58716
Item20	-0.2606	0.56479	Item24	-0.344	0.58516	Item4	-0.284	0.57052
Item5	-0.1502	0.53749	Item7	-0.2872	0.57131	Item19	-0.1965	0.54897
Item30	-0.031	0.50776	Item29	-0.1559	0.53889	Item14	-0.0126	0.50315
Item11	0.02377	0.49406	Item2	-0.1465	0.53656	Item24	0.0551	0.48623
Item14	0.15256	0.46193	Item30	-0.1465	0.53655	Item17	0.08424	0.47895
Item27	0.20791	0.44821	Item10	-0.1184	0.52958	Item16	0.11351	0.47165
Item19	0.33856	0.41616	Item9	-0.1091	0.52725	Item30	0.12309	0.46927
Item28	0.38568	0.40476	Item25	-0.0905	0.5226	Item20	0.14258	0.46441
Item9	0.39528	0.40245	Item23	0.01203	0.49699	Item1	0.21093	0.44746
Item26	0.42375	0.39562	Item8	0.15219	0.46203	Item5	0.27015	0.43287
Item22	0.47165	0.38423	Item28	0.24625	0.43875	Item18	0.37919	0.40632
Item8	0.51024	0.37514	Item6	0.29362	0.42712	Item29	0.54148	0.36784
Item17	0.53936	0.36834	Item11	0.41794	0.39701	Item12	0.56183	0.36312
Item2	0.53938	0.36833	Item22	0.42759	0.3947	Item13	0.73035	0.32512
Item1	0.54912	0.36607	Item15	0.48587	0.38087	Item6	0.90667	0.28768
Item21	0.8429	0.30093	Item4	0.53492	0.36937	Item8	0.91793	0.28538
Item23	0.92873	0.28318	Item13	0.78844	0.3125	Item27	0.96345	0.27619
Item6	0.93968	0.28097	Item20	0.88409	0.29233	Item22	0.96346	0.27619
Item4	0.97258	0.27437	Item12	0.91671	0.28563	Item25	1.02141	0.26475
Item24	1.00575	0.26781	Item17	1.22746	0.22663	Item23	1.11694	0.24658
Item3	1.13188	0.24381	Item18	1.28951	0.21594	Item21	1.38479	0.20024
Item18	1.26475	0.22016	Item19	1.55695	0.17409	Item26	1.43942	0.19163
Item7	1.37985	0.20103	Item14	1.83385	0.13778	Item28	1.90226	0.12985
Item12	2.03523	0.11555	Item16	1.99068	0.12019	Item15	2.38282	0.08449



Element xarakteristika chiziqlari



Element ma'lumot chiziqlari



Test ma'lumot chiziqlari